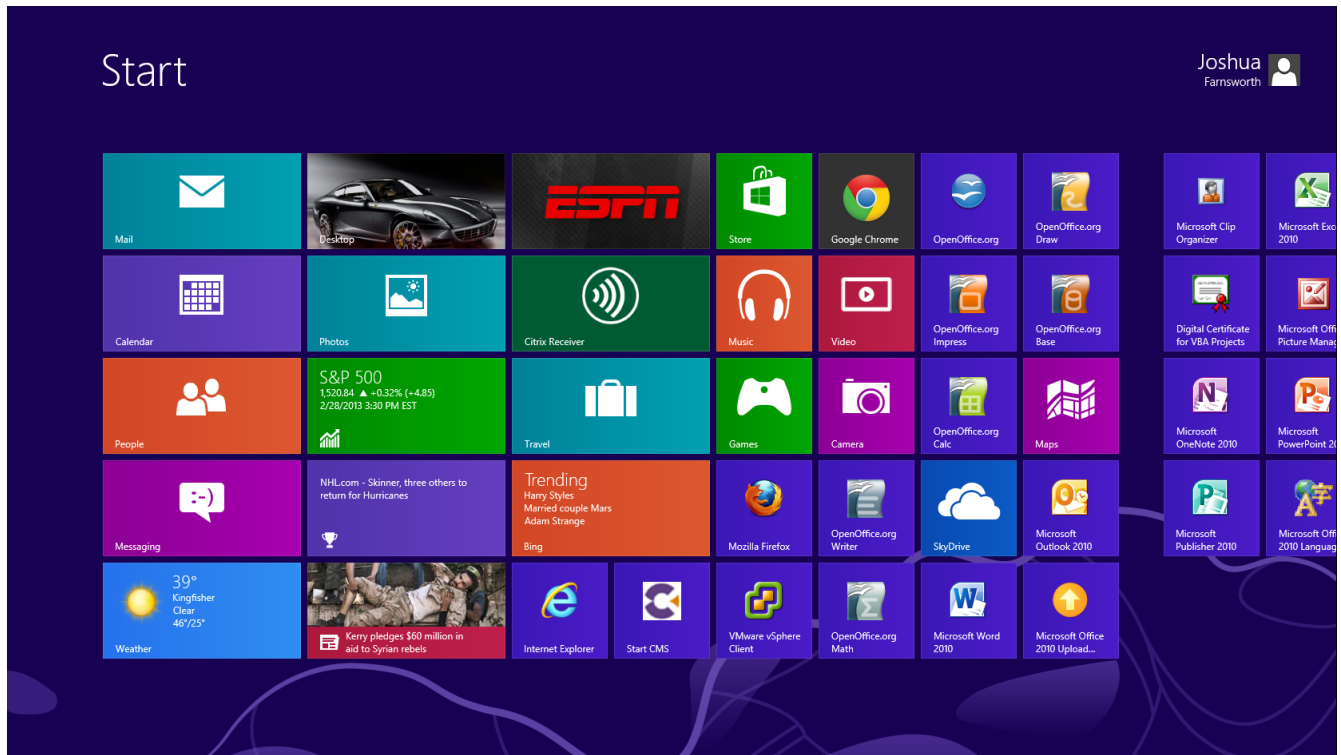
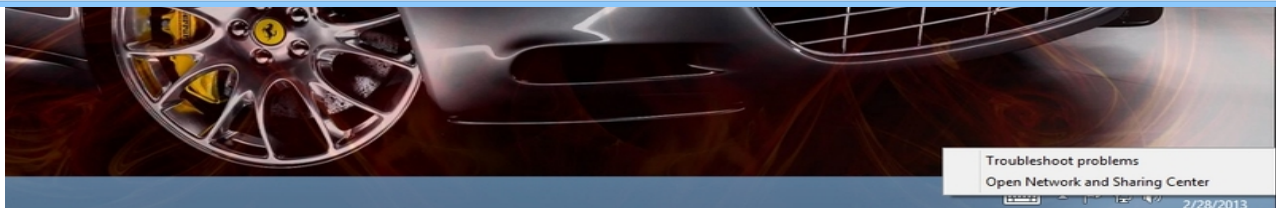
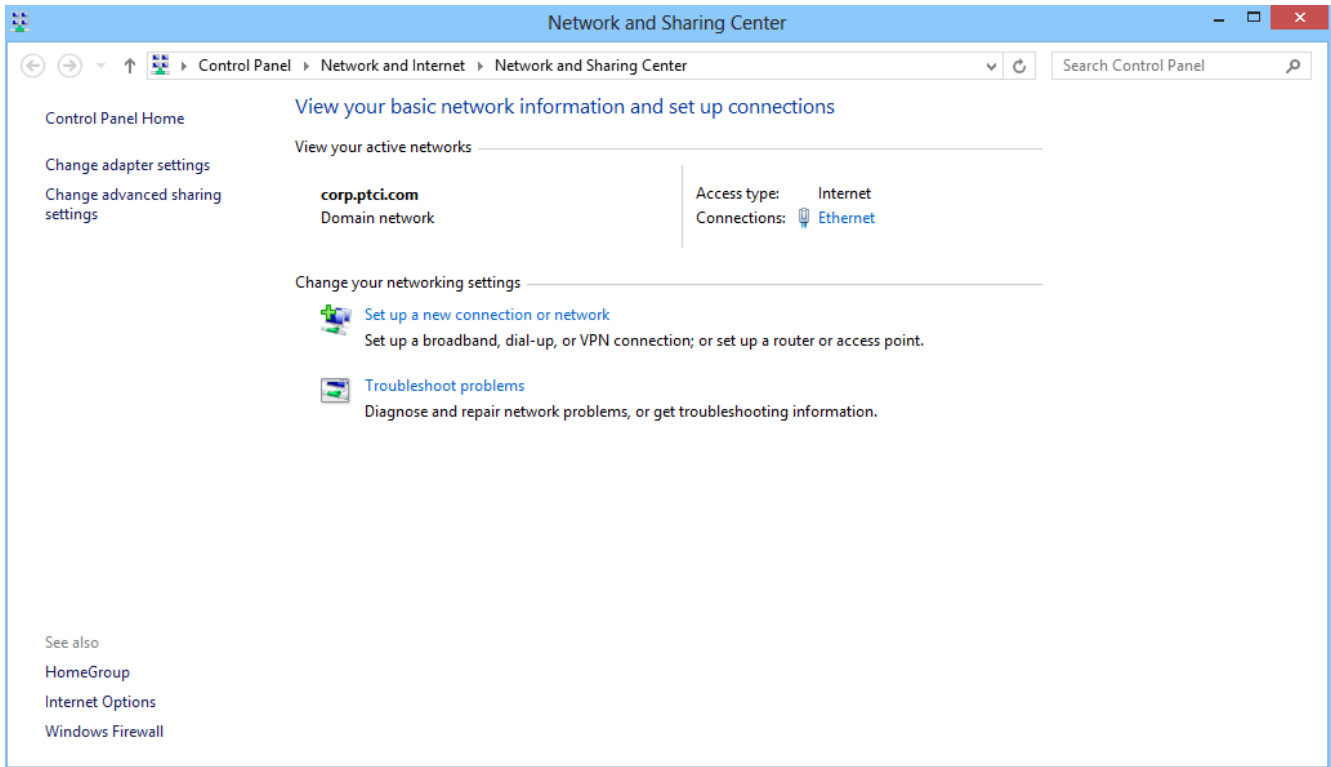


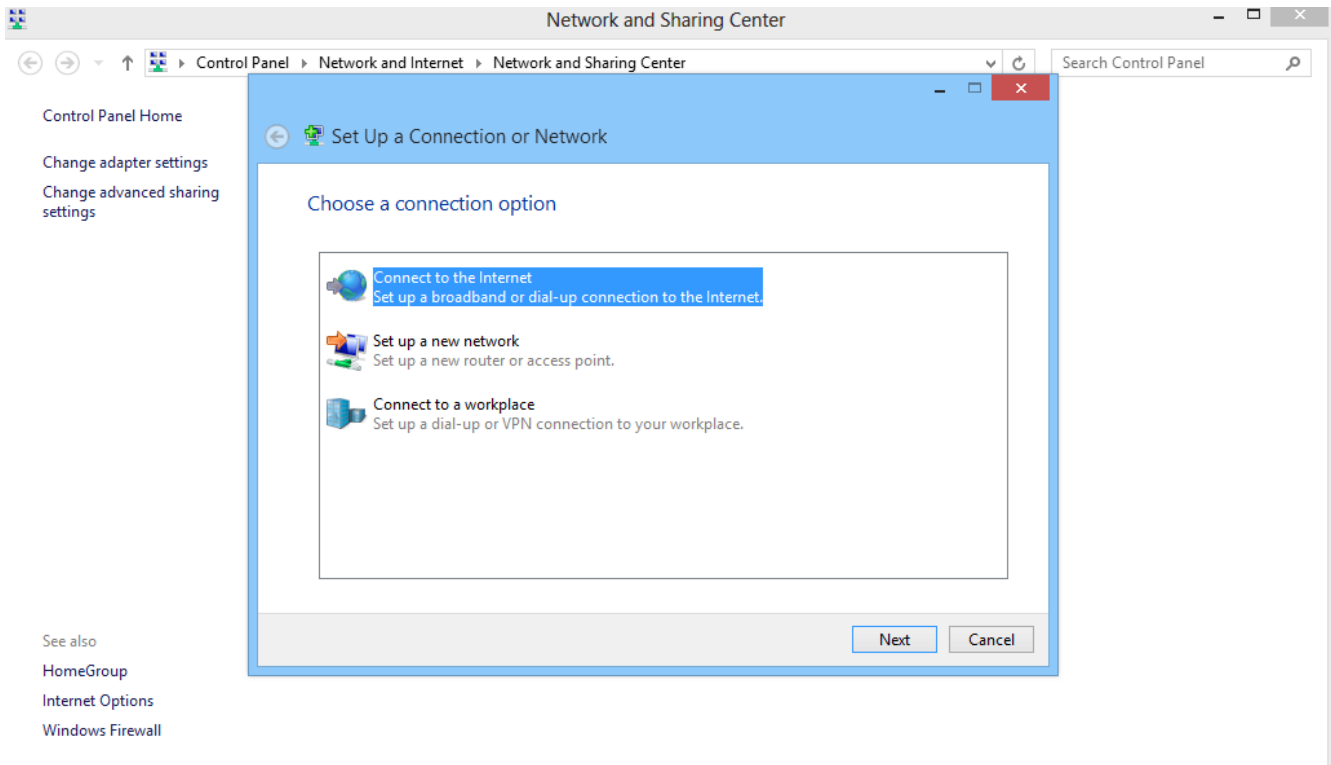
The Windows 8 **Home** screen has a tile view like the image below. Click on the tile labeled **Desktop**. It will be in one of the tile positions on the home screen. In this example, the tile with the car is labeled **Desktop**.



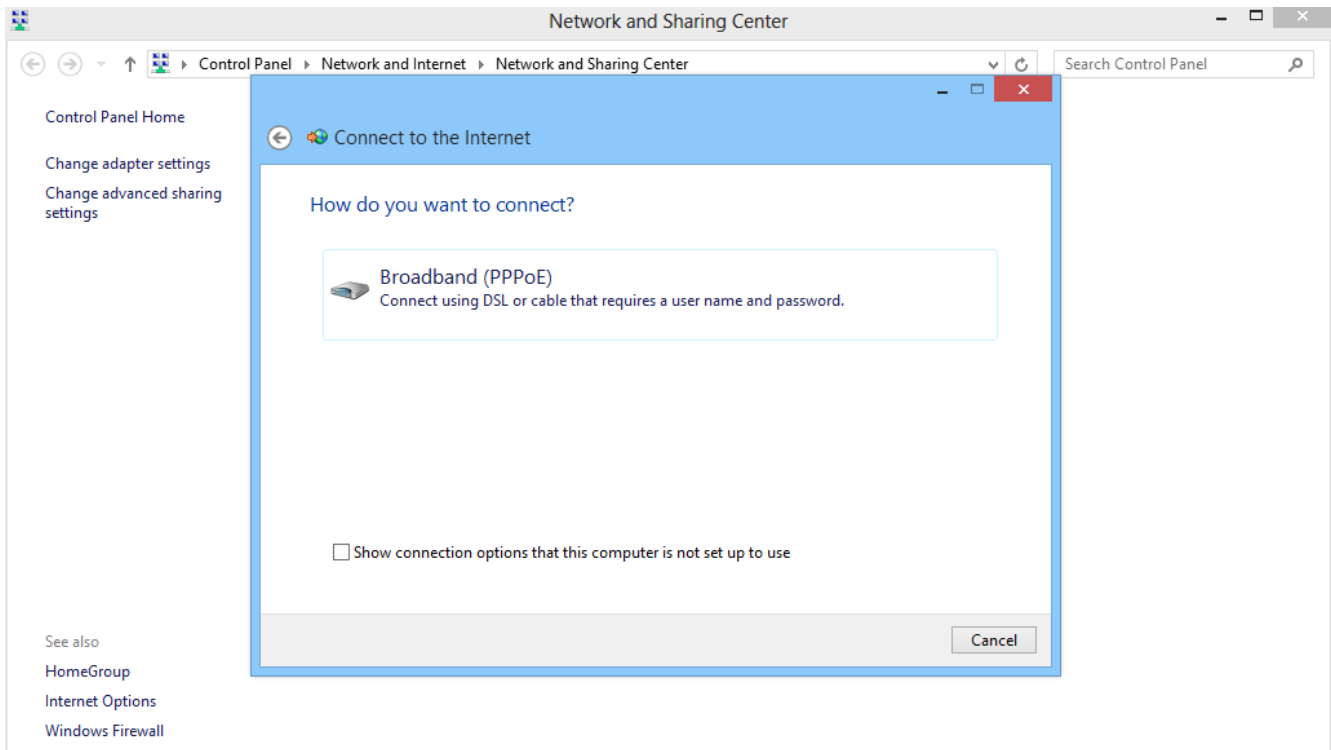
In the lower right-hand corner of the desktop, there is a network icon that looks like a computer. Right-click the icon and you will see a pop-up menu with **Open Network and Sharing Center** as an option. Click on **Open Network and Sharing Center**. Click **Set up a new connection or network** option in the window that appears.



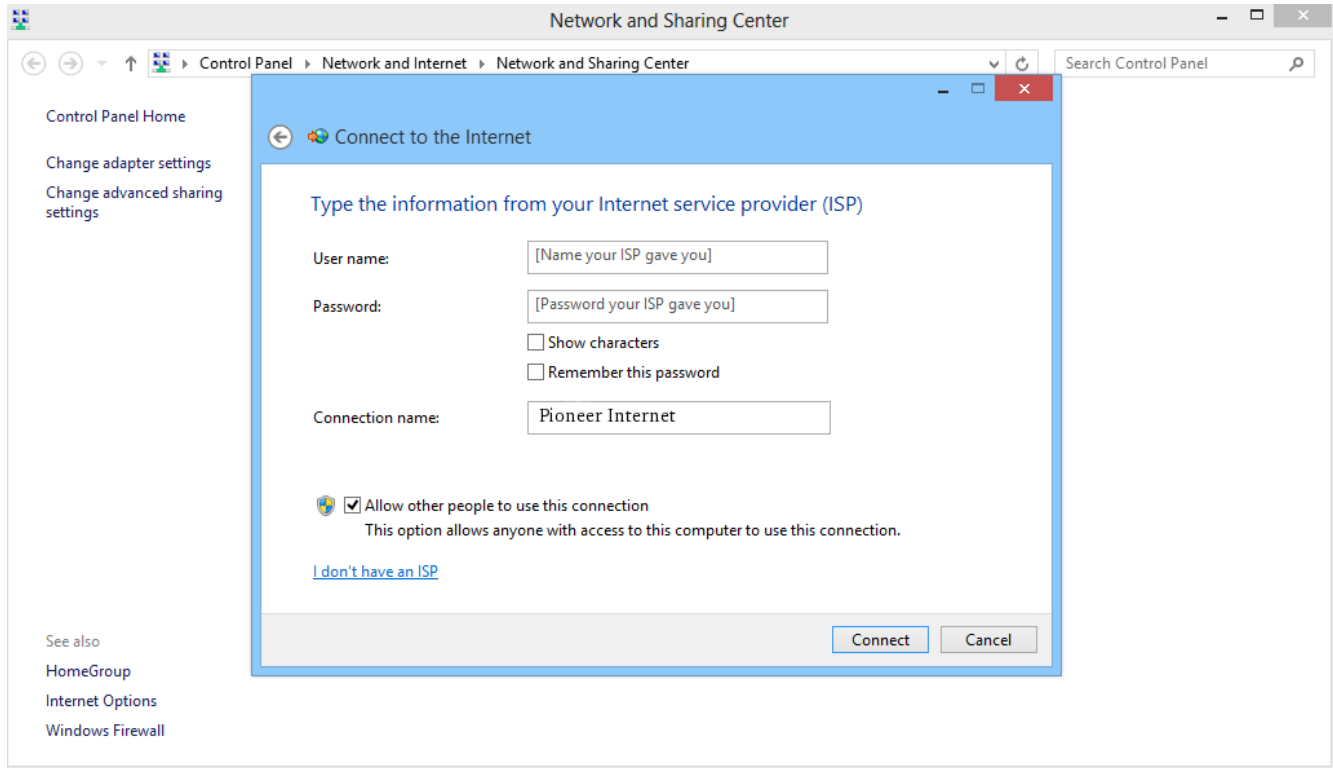
A window will be displayed with connection options. Click **Connect to the Internet** option and then click the **Next** button.



A dialog box will ask how you want to connect. Select the **Broadband (PPPoE)** option which will display the connection window.



Enter the **user name** and **password** provided by Pioneer Internet for your PPPoE connection. Be sure to include @pldi.net after the username. For the **Connection name**, enter Pioneer Internet so that it will be easy to find in the future. Once this information is entered, click the **Connect** button.



Your connection is now set up to connect to Pioneer Internet. To reconnect to the Internet in the future using this connection, click the network icon in the lower right-hand corner of the screen (small computer) and you will see a list of connections including the once just created.

